

List of dental clinic in Toyokawa city (Members of dental association only)

April 1, 2023 currently

【英語】

J.H.S district	Elem. school	Medical Institution	Address (Clinic)	Tel	
Tobu	Toyokawa	Uchida Shika lin	Toyokawa sakae machi 85 Tokiwa Bldg. 2F	0533-85-8125	
		Kawakami Shika Clinic	Chuo dori 2-44	0533-84-8817	
		Shiraiwa Shika lin	Chuo dori 2-32	0533-89-3217	
		Tsujita Shika lin	Suehiro dori 2-13-2	0533-86-8181	
		Herb Shika Clinic	Baba-cho kamiishibata 66	0533-89-5688	
		Mirai Shika Kodomo Shika Clinic	Ekimae dori 2-98-2	0533-83-2288	
		Yamamoto Shika lin	Toyokawa-cho nihodori 75-1	0533-83-8566	
		Tobu	Aoyagi Shika	Ueno 3-57	0533-85-7735
	Sasaki Shika Clinic		Asoda-cho teramae 5-1	0533-65-7033	
	Naito Shika		Asoda-cho oarako 2-1	0533-84-8000	
	Sakuragi	Amano Shika lin	Sakuragi dori 1-35	0533-85-3220	
		Goto Byoin・Shika	Sakuragi dori 4-10-2	0533-86-8166	
		Sakuragi Shika lin	Sakuragi dori 5-20-3	0533-86-1100	
	Yutaka	Enomoto Shika lin	Higashiyutaka machi 5-36	0533-89-5605	
		Kawai Shika	Obori-cho 286	0533-89-6688	
		Sugaya Shika lin	Obori-cho 119	0533-85-8148	
	Ichinomiya	Ichinomiya seibu	Otani Shika lin	Ichinomiya-cho shimoshinkiri 7-1	0533-93-7164
			Kato Shika lin	Ichinomiya-cho sakae 15	0533-93-5131
			Nakao Shika lin	Ichinomiya-cho izumi 135	0533-93-5122
			Wakuta Shika lin	Ichinomiya-cho kamishinkiri 375-1	0533-93-5848
		Ichinomiya nambu			

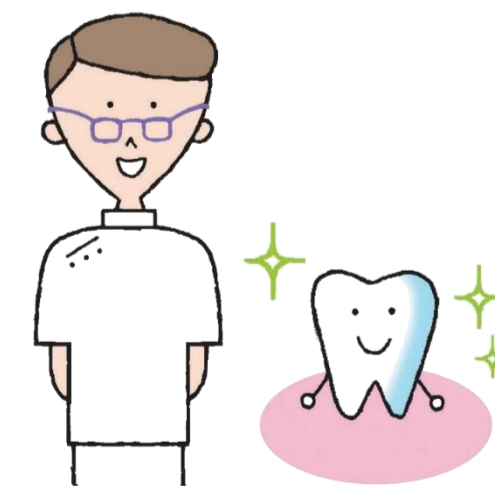
J.H.S district	Elem. school	Medical Institution	Address (Clinic)	Tel	
Chubu	Hachinan	Wellness Yawata Shika lin	Noguchi-cho shin yashiki 27	0533-95-1220	
		Ogawa Shika Koku Geka・Kyosei Shika	Noguchi-cho nishiura 3-1	0533-89-0118	
		Soda Shika lin	Noguchi-cho michishita 26-1	0533-89-7733	
		Toyokawa Shimin Byoin *Shika Koku Geka	Yawata-cho noji 23	0533-86-1111	
		Natsume Shika lin	Ichida-cho yagenji 1-1	0533-83-2500	
		Hattori Shika Clinic	yawata-cho nishiakatsuchi 26	0533-87-5166	
		Matsuyama Shika Clinic	Ichida-cho nakaburo 98	0533-56-8282	
		Hirao	Hirao Shika	Hirao-cho maeda 74-1	0533-82-2777
			Sanzogo	Kobayashi Shika	Sanzogo-cho ichiritsuka 27-4
		Hoshino Shika		Honno-cho nishiura 7	0533-89-5757
	Kanaya	Kanaya		Kawashima Shika lin	Chuo dori 4-57
			Goto Shika lin	Kanayabashi-cho 105	0533-85-7870
		Nakao Shika lin	Chitose dori 1-38	0533-86-8978	
		Daida	Sakura machi	Wakuta Shika lin	Zoshi 1-26-44
	Adachi Family Shika			Zoshi 6-10-15	0533-80-3711
	Daida		Okada Kyosei Shika (Tooth alignment correction only)	Suwa 3-302 Prio II - 1F	0533-82-3600
			Terabe Shika lin	Suwa nishimachi 2-24	0533-86-1586
			Miyauchi Shika lin	Suwa nishimachi 2-107	0533-83-2670
Yamamoto Shika Clinic			Suwa 4-176	0533-86-3341	

J.H.S district	Elem. school	Medical Institution	Address (Clinic)	Tel	
Nambu	Ushikubo	Okada Shika lin	Chitose dori 4-8 Hakuyo Medics 3F	0533-86-8241	
		Ono Shika lin	Ushikubo-cho tokiwa 103	0533-86-2227	
		Tai Shika Clinic	Kotobuki dori 2-4-1	0533-84-5113	
		Harada Shika	Takami-cho 1-42	0533-83-8811	
		Yamaguchi Shika lin	Shimonagayama-cho nakayashiki 5	0533-89-0235	
		Tanno	Yagi Shika lin	Kanazuka-cho 2-63	0533-86-4341
	Chubu		Anto Dental Clinic	Shimonogawa-cho1-27	0533-83-1182
		Ohara lin Shika	Matsuhisa-cho 2-1-1	0533-56-2605	
		Kanie Shika lin	Shinsakuramachi dori 1-44	0533-89-9001	
		Suzuki Shika	Suwa 2-277	0533-84-6258	
		Tomiyasu Shika	Minami odori 4-16	0533-85-5508	
		Higuchi Dental & Care Ohisama Shika	Hagiyama-cho 3-20-8	0533-56-8999	
		Hirano Shika lin	Yamamichi-cho 2-42	0533-86-2291	
		Fujii Shika lin	Yotsuya-cho 2-8-1	0533-85-1125	
		Hoshino Shoni Shika	Ushikubo ekidori 4-37-1	0533-84-8250	
		Kozakai	Kozakai higashi	Ito Shika Clinic	Ina-cho minamiyama shinden 305-70
	Sogo Aoyama Byoin *Shika Koku Geka			Kozakai-cho doji 100-1	0533-73-3777
	Sato Family Shika			Shinozuka-cho obori 165	0533-72-7188
Hirota Shika Clinic	Ina-cho minamiyama shinden 325-7			0533-78-2802	
Watanabe Shika	Shuku-cho nakajima 83-1			0533-78-6567	

J.H.S district	Elem. school	Medical Institution	Address (Clinic)	Tel
Otowa	Nagasawa Akasaka	Fujii Shika	Nagasawa-cho mukaidani 130-1	0533-80-1577
		Amano Shika lin	Akasaka-cho yamakage 215	0533-88-5582
		Otowa Shika lin	Akasaka-cho dainichi 172-1	0533-88-6203
Seibu	Ko	Atoda Shika	Ko-cho shimogahara 55-5	0533-87-3404
		Ito Shika lin	Yawata-cho oike 17-16	0533-88-5630
		Imai Shika lin	Shinsakae machi 3-75-7	0533-88-2649
		Ko Shika lin	Shinsakae machi 1-1	0533-88-2700
		Kobayashi Shika lin	Shin aouma-cho 5-34	0533-87-2521
		Sugiishi Shika Clinic	Ko-cho sakurada 75-1	0533-88-3380
	Miyabi Shika	Tameto-cho kamikaharada 6-7	0533-82-4181	
	Goyu	Kaede Shika	Goyu-cho manpukuji 54-2	0533-87-2562
		Nakatani Shika lin	Goyu-cho hachimenmae 15-2	0533-87-5468
		Hosoi Shika lin	Goyu-cho wakamiya 11	0533-88-4234
Mito		Mito hokubu	Haga Shika	Mito-cho nishigata higurashi 23-2
	Adachi Shika Clinic		Mito-cho nishigata kitsunozuka 70	0533-76-3781
	Mito nambu	Imaizumi Shika lin	Mito-cho onmanishi 46-2	0533-76-3011
		Sugiura Shika	Mito-cho onmakami 131-1	0533-76-2419



※Ordinary dental treatment is not available at some dental clinics.
Contact dental clinic and make a reservation in advance!!



Both adults and children !

Let's go to see a dentist !

For maintaining dental and oral health,
periodontal checkup by "family dentist" is recommend
even if you don't have pain.



© いなりん